

tip
firemakers

no 3.0

p 4	TULP. The story so far
p 6	Burner: single, double or 'wood burner'
p 8	What you can't see is just as special as what you can
p 10	Basic, making the ordinary extraordinary
p 38	Steel, as a work of art...
p 46	Under-Cover, invisible moulds produce a visibly beautiful end product
p 56	Burner decoration - Back panel
p 58	Technical drawings

Every fire
has a story





B-fire 35



B-fire 60



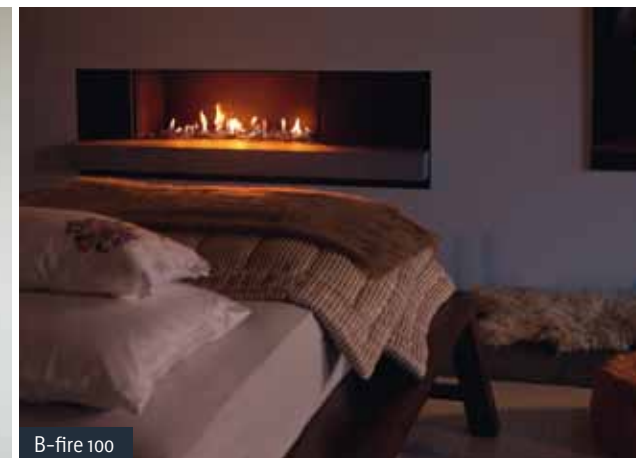
B-fire 100



B-fire 100 high 3 sided



B-fire 35



B-fire 100



B-fire 35



B-fire 35



S-fire 50



B-fire 60



B-fire 80



B-fire 95



B-fire 100 high



B-fire 150



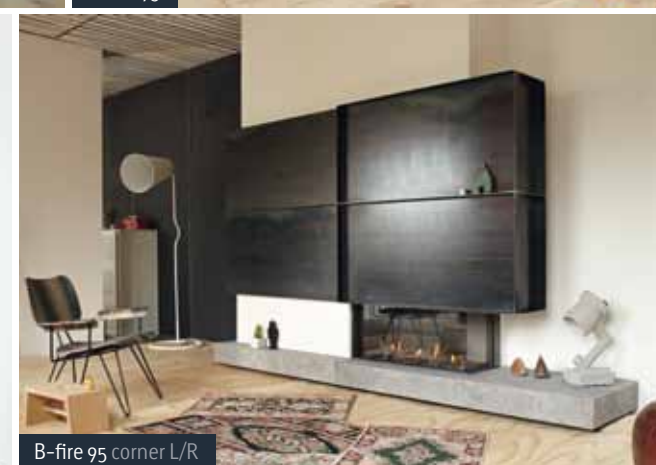
C-fire 200



B-fire 150



B-fire 95 3 sided



B-fire 95 corner L/R



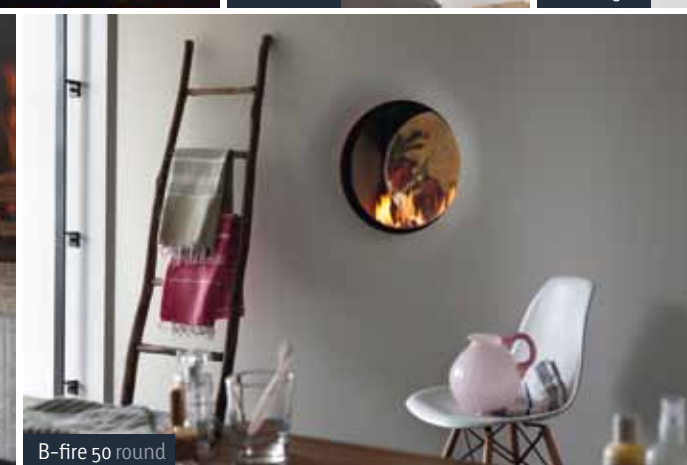
B-fire 100 high



B-fire 100 high corner L/R



B-fire 50



B-fire 50 round



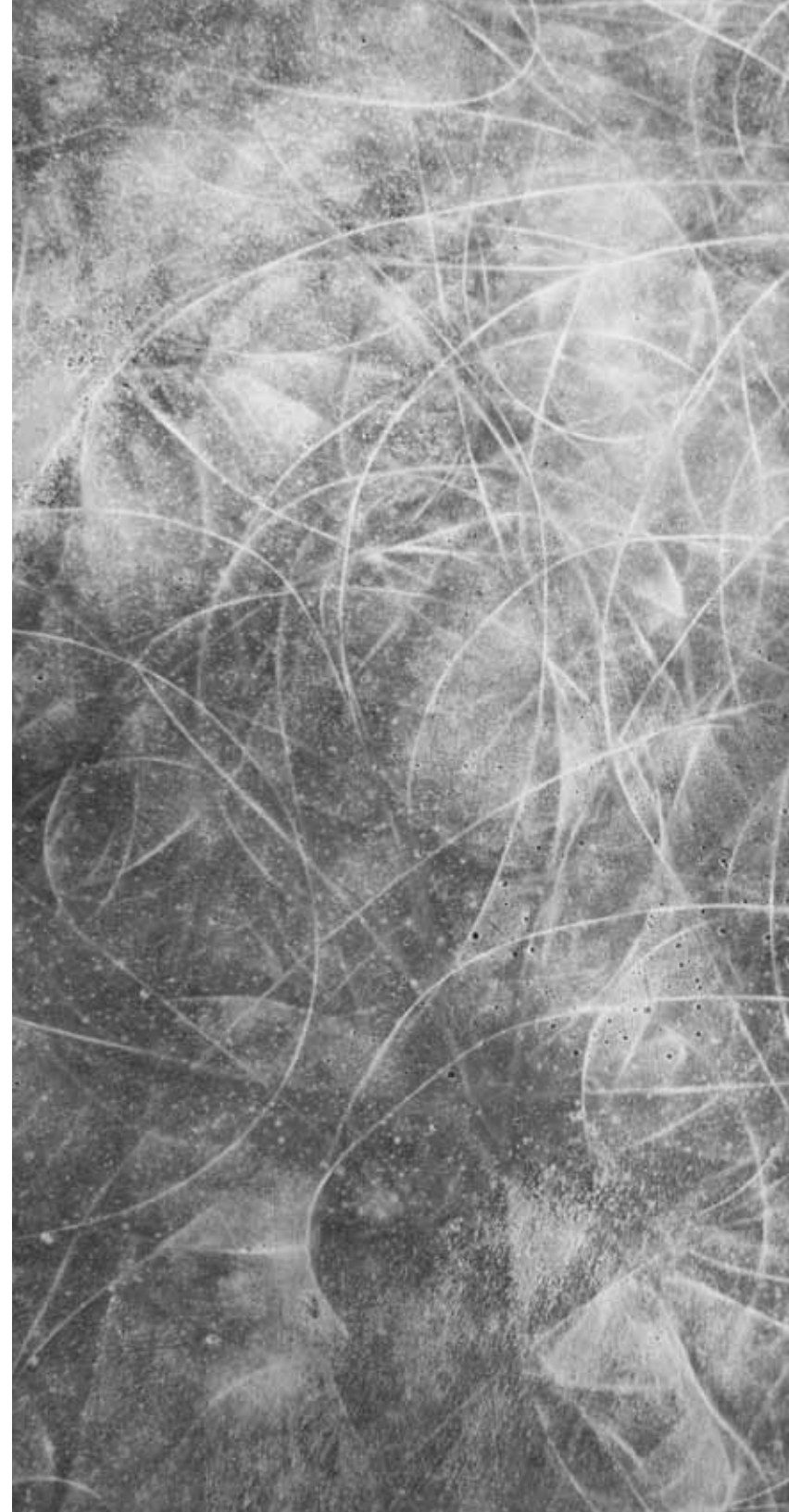
B-fire 100

TULP The story so far

TULP's story is all about a passion for fire. Chatting together while you gaze into the flames. Spending good times in front of a fireplace with clean lines and a timeless design. And never forgetting that the primary purpose of any fire is to keep you cosy and warm.

TULP firemakers was founded in 2006, driven by Michael Tulp's desire to fully exploit his talents of uniting people and expertise to create beautiful objects. TULP offers a new take on fire and is always on the lookout for innovative technologies, materials and styling. "We track demand and market developments very closely. We're always looking to create the best possible experience", says Michael Tulp. This means continuously working on inspiring combinations. In fact, TULP quickly joined forces with designers such as Piet Boon, Piet Hein Eek and Roderick Vos. The company is also involved in some surprising partnerships, for example with Under-Cover, making optimal and original use of craftsmanship and expertise. TULP embraces innovation and has but one goal: to ensure that your fire is a central and invaluable part of your home.

This is TULP's story – one which is reflected in the company's unique products, each of which tells its own individual tale. Innovative materials, unexpected points of view. Beautiful memories of a warm evening... **Every fire has a story.**



B-fire 50 round

Under-Cover frame **UC 50 round**

Burner: single, double or ‘wood burner’



1 single burner



2 double burner



3 ‘wood burner’



1 Single burner

- Minimal depth (24 cm)
- ‘Living’ flame
- Excellent value

2 Double burner

- Optimal fire experience across full depth
- Adjustable heat
- Longer ‘heating season’

3 ‘Wood burner’

- Authentic ‘wood’ fire
- Realistic logs
- Adjustable heat

About our fires

TULP creates fires with single burners, double burners and ‘wood’ burners. While each type has its own unique flame configuration, the primary aim is to create a genuine ‘fire experience’.

Double-burner fires are perfect for creating the optimal fire experience since the flames are distributed across the full depth of the unit. You can even switch one of the burners off, reducing the heat output by half while maintaining efficiency at 80%. Say hello to wonderful spring and autumn evenings!

Another option is the wood-burner fire, featuring a wide burner at the front with standard flames combined with a smaller burner at the back producing high flames. The authentic, stacked logs look just like a genuine wood fire.

Then we have the single-burner fires. At only 24 cm deep, they are easy to install in spaces where a gas fire was previously not an option, such as smaller living rooms, kitchens, bedrooms and studies. They may not be deep, but they are extremely effective.

TULP’s gas fires are available in a range of sizes and with different features. You can opt for logs, attractive stones, or a steel, ridged or a glass back panel to enhance the fire experience – there’s something for everyone. So be inspired – your dealer will be happy to help you further!



What you can't see is just as special as what you can

Benefits Under-Cover

- tight finishing
- will not crack
- heatresistant
- ecological friendly (cradle to cradle)

Under-Cover

The story behind a TULP fire is often just as interesting as the fire itself! Take the story of Under-Cover, for instance, a unique technique making a range of organic forms possible. Until recently, Under-Cover was used primarily with lamps and doors, for example in the design of FLOS and Under-Cover doorframes. Thanks to TULP's passion for fire, Under-Cover can now be applied to fireplaces – a development which has opened up unprecedented possibilities, whether you live in a 17th-century house or in an apartment.

Under-Cover: On the outside, it's an exquisite fire with gently sloping stucco, but hidden behind this beautiful exterior are moulds made of a heat-resistant composite, seamlessly fitted into your wall and no gaps around the edge of the stucco work. The lightweight frame is easy to fit and the polished top surface can be easily painted in any colour you choose. Depending on the type of frame chosen, the fire can either be built fully into the wall or stand just proud of it. Choose from a range of frames, including models designed by Piet Boon and Roderick Vos.

Another positive attribute: Under-Cover is completely cradle-to-cradle. Under-Cover frames are fully biodegradable meaning they can be recycled for use with a new product...such as a new TULP fire!

B-fire 35

B-fire 35

Glass dimensions: 35 x 100 cm (w x h)
Available with single or double burner

Basic,
making the
ordinary
extraordinary





The ordinary made extraordinary

There's nothing ordinary about TULP's 'standard' fires; our 'basic' models are anything but. For instance, we can produce special sizes up to a metre and a half wide and a metre high. You can opt for a shallow model, or one with double burners that produces a 'denser' flame and lets you adjust the heat. All of TULP's gas fires are available with either a steel or glass back panel. Some can also be supplied as see-through models.

Amazingly ordinary. And yet nothing is more personal than your own customised fire. You might want to create a nostalgic atmosphere, or perhaps you prefer a more modern, minimalistic ambiance. A TULP fire can be customised to your own personal specifications. How about a standard fire designed by Piet Boon? Or a TULP fire combined with Under-Cover, a sustainable cradle-to-cradle mould which can be used to create organic forms?

And for the ultimate in personalisation, you can always work with your dealer to create a separate surround. TULP standard fires: something special for any interior.

S-fire 50

S-fire 50

Glass dimensions: 52 x 55 cm (w x h)

Available with single or double burner





B-fire 60

B-fire 60
Glass dimensions: 60 x 80 cm (w x h)
Only available with 'wood-burner'



B-fire 60

B-fire 60

Glass dimensions: 60 x 80 cm (w x h)

Only available with 'wood-burner'



B-fire 80

B-fire 80

Glass dimensions: 80 x 65 cm (w x h)

Only available with 'wood-burner'



B-fire 95

3 sided

B-fire 95 3 sided

Glass dimensions: 88 x 38 x 29 cm (w x h x d)

Only available with double burner



B-fire 95

3 sided



B-fire 95 3 sided

Glass dimensions: 88 x 38 x 29 cm (w x h x d)

Only available with double burner





B-fire 95

corner L/R

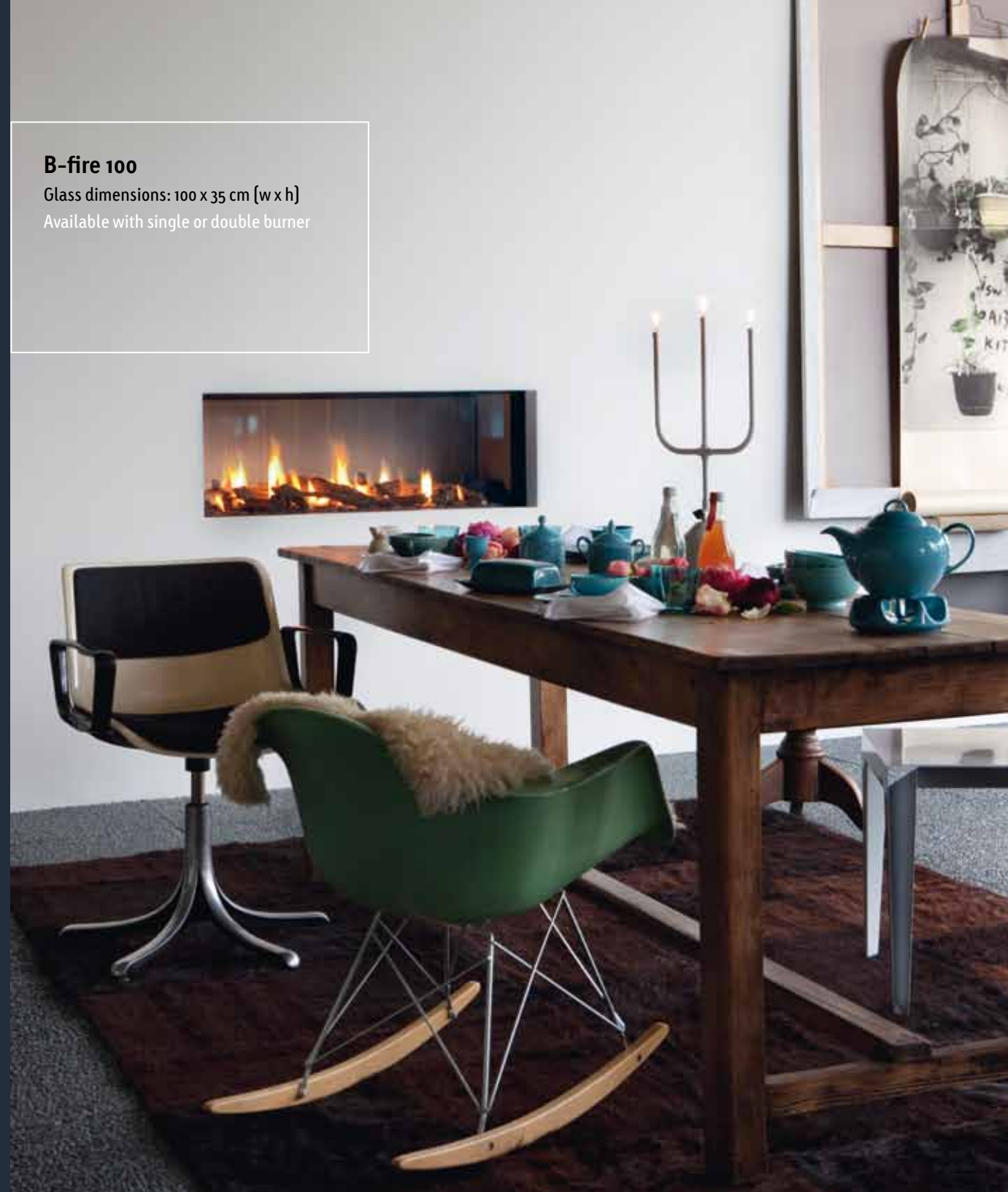
B-fire 95 corner L/R
Glass dimensions:
88 x 38 x 29 cm (w x h x d)
Only available with double burner

B-fire 100

B-fire 100

Glass dimensions: 100 x 35 cm (w x h)

Available with single or double burner



There's nothing more
personal than your
own customised fire

B-fire 100

high



B-fire 100 high
Under-Cover frame: UC 100 H
Glass dimensions: 100 x 65 cm (w x h)
Only available with 'wood-burner'



B-fire 100 high

Glass dimensions: 100 x 65 cm (w x h)

Only available with 'wood-burner'



B-fire 100
high





B-fire 100

high 3 sided

B-fire 100 high 3 sided
Under-Cover frame: UC 100 H 3 sided
Glass dimensions:
100 x 65 x 40 cm (w x h x d)
Only available with 'wood-burner'



B-fire 100

high corner L/R

B-fire 100 high corner L/R

Under-Cover frame:

UC 100 H corner L/R

Glass dimensions:

100 x 65 x 40 cm (w x h x d)

Only available with 'wood-burner'





B-fire 150

B-fire 150

Glass dimensions: 150 x 35 cm (w x h)

Available with single or double burner

B-fire 35

Steel frame **SC 35**

B-fire 35

Steel frame: SC 35

Glass dimensions: 35 x 100 cm (w x h)

Available with single or double burner

Steel,
as a work of art...





Robust yet understated

TULP's 'standard' fires are true works of art. As beautiful items in their own right, they deserve a superior frame – which is why TULP now makes steel frames designed around simplicity and durability: steel and fire combine to exude raw power in any interior, coupled with a timeless design in 6-mm sheet metal. Brushed steel epitomises purity and an understated elegance, especially when combined with beautifully finished natural stone.

The frames themselves are splendid, of course. But what's really unique about them is that they are partially embedded in the wall to produce the modern, understated chic of which we at TULP are so proud.

That is how we make cold steel warm. And that is precisely what makes TULP's steel frames so contemporary in terms of design and material – giving them a timeless beauty.

B-fire 50

Steel frame **SC 50 stone**

B-fire 50

Steel frame: SC 50 stone

Glass dimensions: 52 x 55 cm (w x h)

Available with single or 'wood' burner



B-fire 100

Steel frame SC 100 stone



B-fire 100

Steel frame: SC 100 stone / Steel frame: SC 100

[Also available in a mirror-image version]

Glass dimensions: 100 x 35 cm (w x h)

Available with single or double burner



C-fire 200



C-fire 200

Glass dimensions: 88 x 38 x 29 cm (w x h x d)

Only available with double burner



B-fire 35

Under-Cover frame **UC 100**

B-fire 35

Under-Cover frame: UC 100

Glass dimensions: 35 x 100 cm (w x h)

Available with single or double burner

Under-Cover,
invisible moulds
produce a visibly
beautiful
end product





B-fire 35

Under-Cover frame **UC 35 Piet Boon**

B-fire 35

Under-Cover frame: UC 35 Piet Boon

Glass dimensions: 35 x 100 cm (w x h)

Available with single or double burner



B-fire 50 round

Under-Cover frame **UC 50 round**

B-fire 50 round

Under-Cover frame: UC 50 round

Glass dimensions: Ø 46 cm

Available with single or 'wood' burner

B-fire 100

Under-Cover frame **UC 100 Roderick Vos**



B-fire 100

Under-Cover frame: UC 100 Roderick Vos

Glass dimensions: 100 x 35 cm (w x h)

Available with single or double burner





B-fire 150

Under-Cover frame **UC 150 Piet Boon**

B-fire 150

Under-Cover frame: UC 150 Piet Boon

Glass dimensions: 150 x 35 cm (w x h)

Available with single or double burner

Also available in a B-fire 100 version

Inspiring partnerships


At TULP, we're always looking to combine inspiring people with innovative techniques and technologies. Right from the start, TULP has worked with talented young designers as well as established names in Dutch design, such as Piet Boon and Roderick Vos.


Piet Boon is a world-famous Dutch designer renowned for his homes, furniture, lighting and hotels, as well as his own version of the Range Rover Sport. His designs are authentic, timeless and comfort-driven, with an emphasis on durability and functionality. As Piet himself says: "A well-designed house should feel like a warm jacket". Fire is a key and recurring element in all of Piet Boon's houses, which is why TULP and Piet are especially pleased to be teaming up.


Roderick Vos is often mentioned in the same breath as such famous figures as Alessi, Driade, Spectrum and Moooi. His intuitive methods and style are rooted in a diverse range of materials, resulting in a wide variety of product designs. For instance, in partnership with TULP, Roderick created the striking Lotus fire basket. Many of his products are on show in museums, including the Stedelijk Museum in Amsterdam. And who knows, one might just be on display in your own home before long!


Burner decoration

a) Logs*
b) White stones
c) Grey stones
d) Diamond Black

a


b


c


d

Back panel

a) Black steel*
b) Black glass
c) Ridged

a

b

c

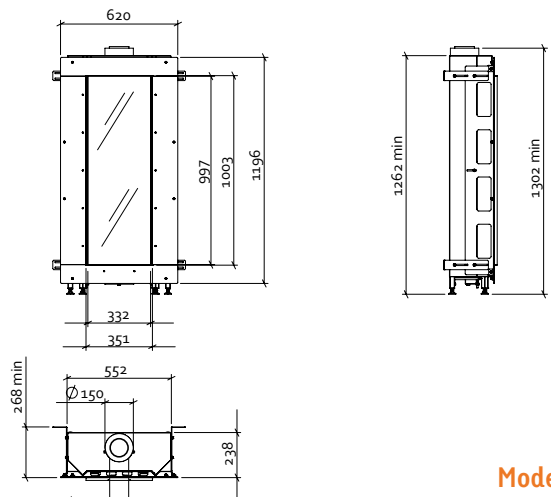
* standard

Model

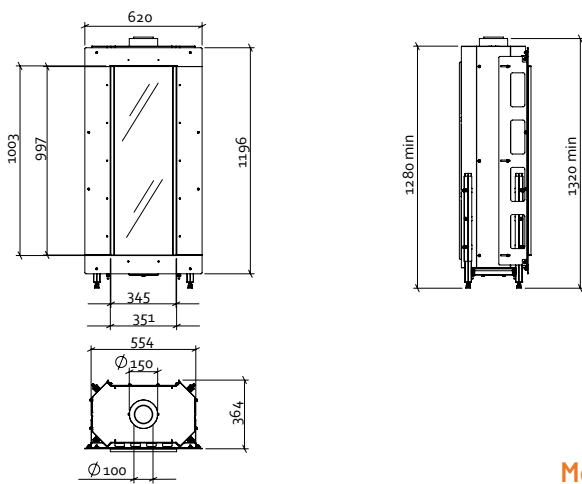
S-fire 35
S-fire 50
S-fire 50 round
S-fire 100
S-fire 150
B-fire 35
B-fire 50
B-fire 50 round
B-fire 60
B-fire 80
B-fire 95 corner L/R
B-fire 95 3 sided
B-fire 100
B-fire 100 high
B-fire 100 high 3 sided
B-fire 100 high corner L/R
B-fire 150
B-fire 35 tunnel
B-fire 50 tunnel
B-fire 50 round tunnel
B-fire 100 tunnel
B-fire 150 tunnel
C-fire 200

Basic fireplace	Under-Cover frame	UC 35 Piet Boon	UC 50 round	UC 100	UC 100 Piet Boon	UC 100 Roderick Vos	UC 150 Piet Boon	Steel frame	SC 35	SC 50 stone	SC 100	SC 100 stone	Interior	Black steel	Black glass	Ridged	Convection casing	Burner decoration	Logs	Grey stones	White stones	Diamond Black	Flue outlet Ø [mm]	Output max. [kW]	1 burner	2 burner
		•		•		•			•					•	•				•	•	•	•	100 - 150	5,5	-	
12			•							•				•	•				•	•	•	•	100 - 150	5,5	-	
														•	•				•	•	•	•	100 - 150	5,5	-	
				•										•	•				•	•	•	•	130 - 200	7,5	-	
					•	•					•	•		•	•				•	•	•	•	130 - 200	8,5	-	
							•																			
11		48		47		•			39					•	•	•	•		•	•	•	•	100 - 150	3,5	7	
										40				•	•	•	•		•	•	•	•	100-150	3,5	7	
			•											•	•	•	•		•	•	•	•	100-150	3,5	7	
14 16														•	•	•	•		•				100-150	5,5	9.5	
19														•	•	•	•		•				100-150	5,5	9.5	
24														•	•	•	•		•	•	•	•	130-200	4	8	
20 22														•	•	•	•		•	•	•	•	130-200	4	8	
26				•		•					43	42		•	•	•	•		•	•	•	•	130-200	4	8	
28 30														•	•	•	•		•				130-200	6	10	
32														•	•	•	•		•				130-200	6	10	
34														•	•	•	•		•				130-200	6	10	
36														•	•	•	•		•	•	•	•	130-200	6,5	11	
		•		•		•			•					•	•	•	•		•	•	•	•	100-150	3,5	7	
										•				•	•	•	•		•	•	•	•	100-150	3,5	7	
			50											•	•	•	•		•	•	•	•	100-150	3,5	7	
				•		•					•	•		•	•	•	•		•	•	•	•	130-200	4	8	
							•							•	•	•	•		•	•	•	•	130-200	6,5	11	
44														•	•	•			•	•	•	•	130-200	4	8	

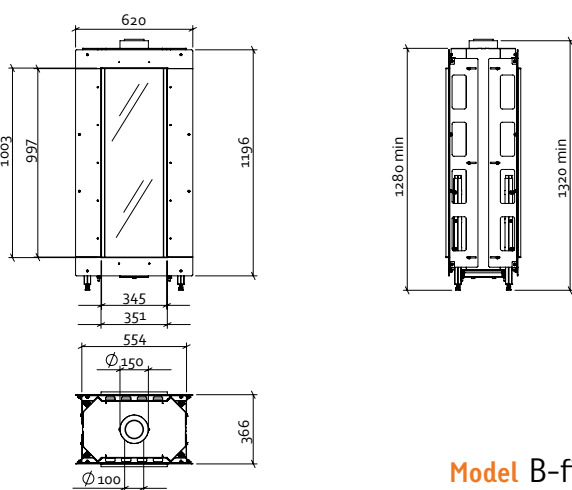
Technical drawings



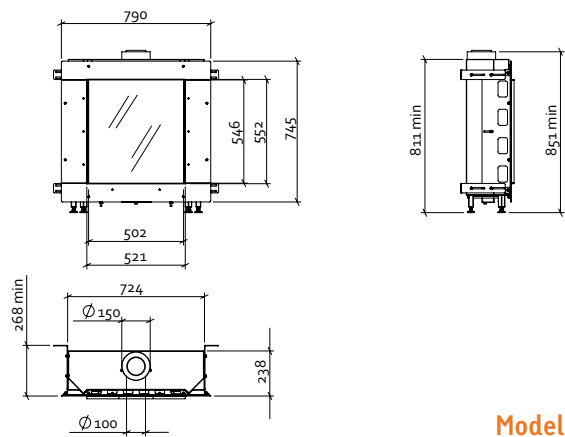
Model S-fire 35



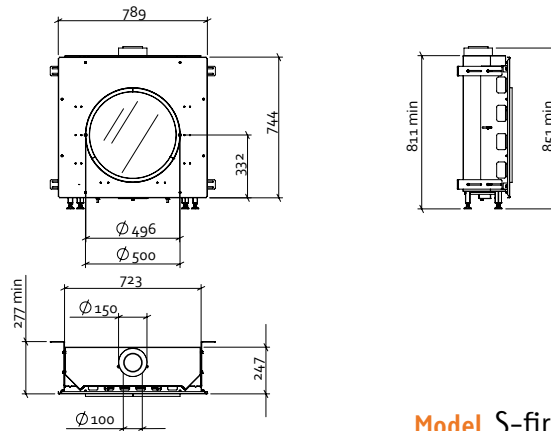
Model B-fire 35



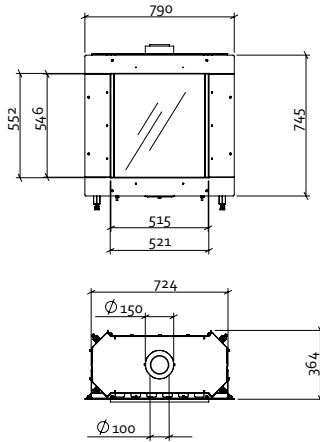
Model B-fire 35 tunnel



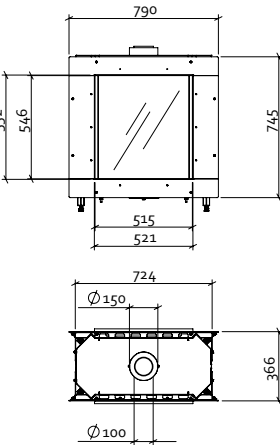
Model S-fire 50



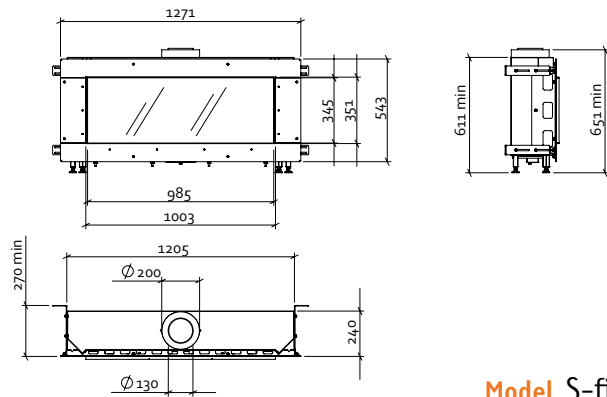
Model S-fire 50 round



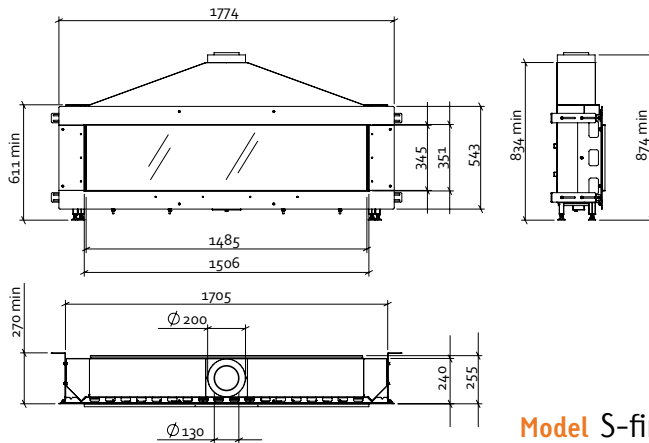
Model B-fire 50



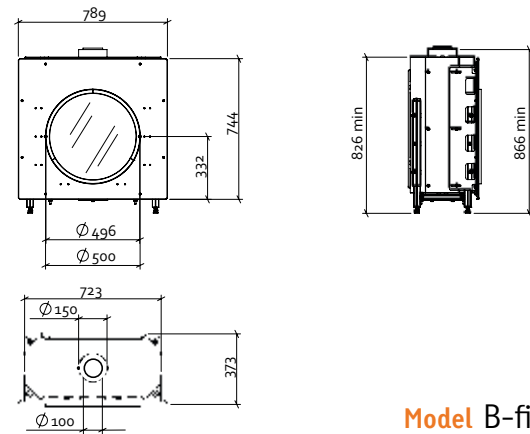
Model B-fire 50 tunnel



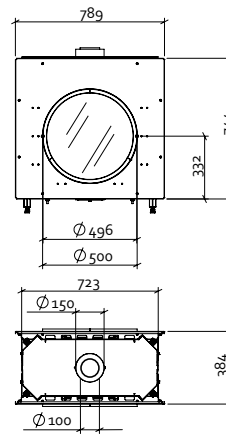
Model S-fire 100



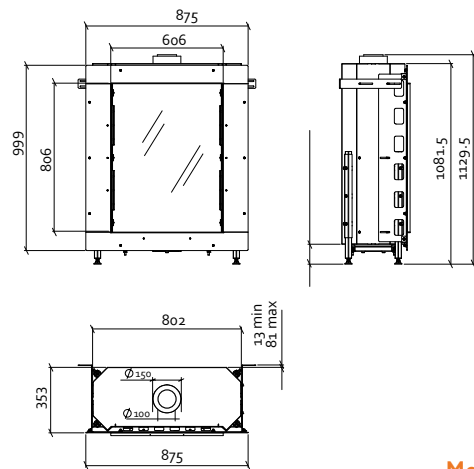
Model S-fire 150



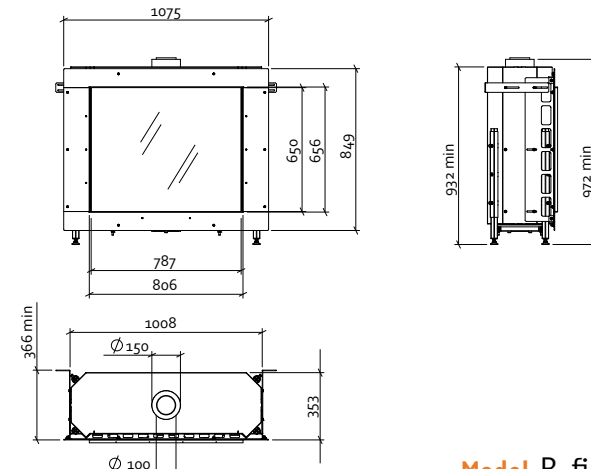
Model B-fire 50 round



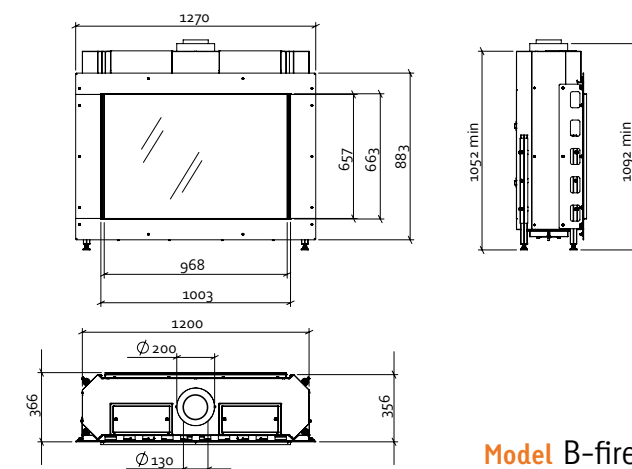
Model B-fire 50 round-tunnel



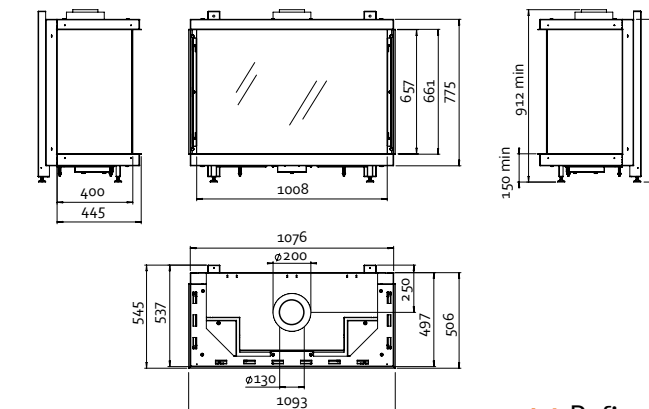
Model B-fire 60



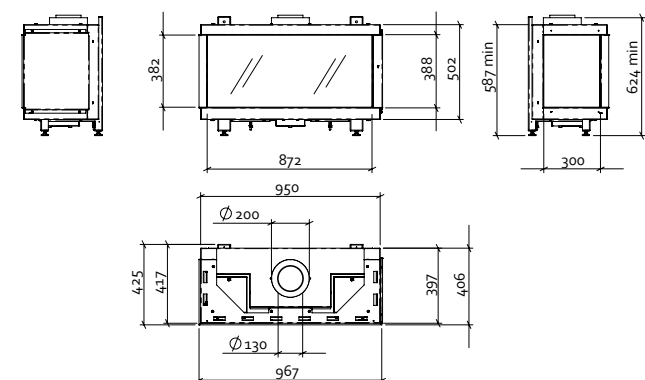
Model B-fire 80



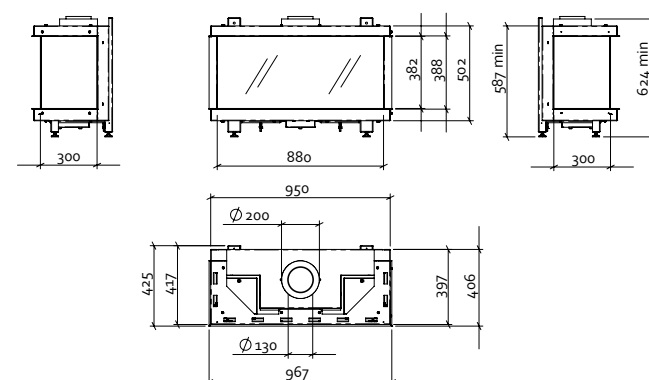
Model B-fire 100 high



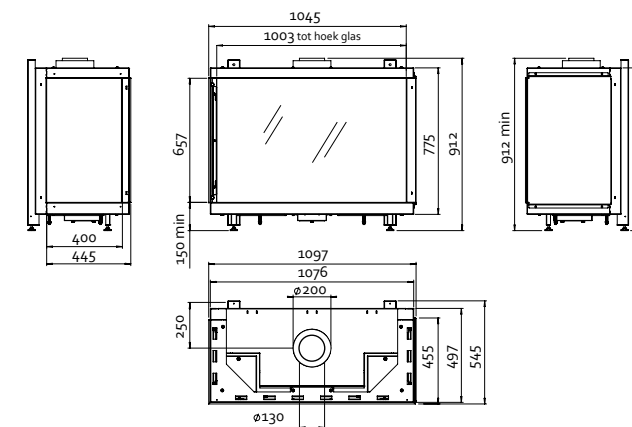
Model B-fire 100 high 3 sided



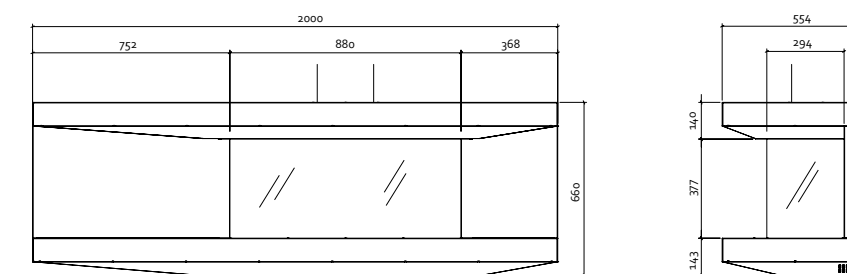
Model B-fire 95 corner L/R



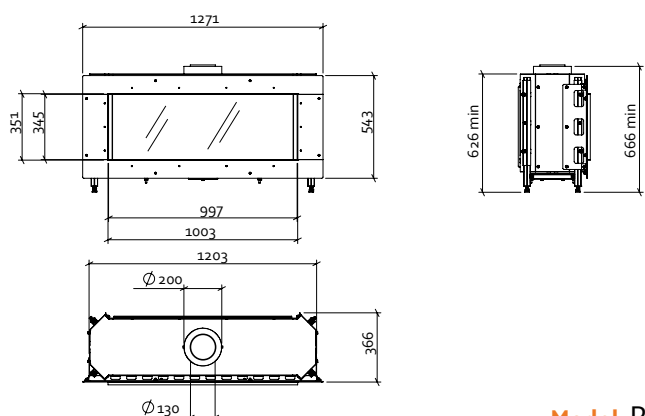
Model B-fire 95 3 sided



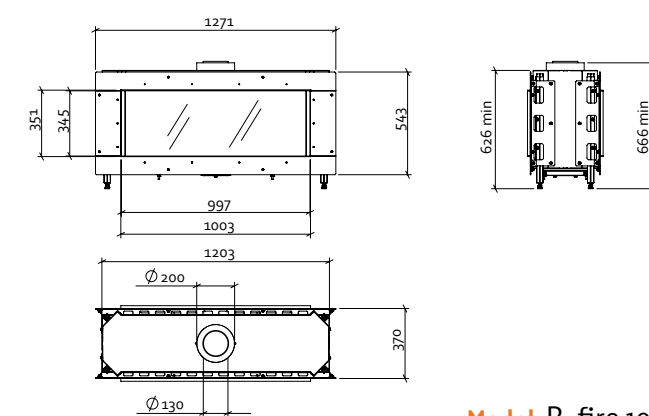
Model B-fire 100 high corner L/R



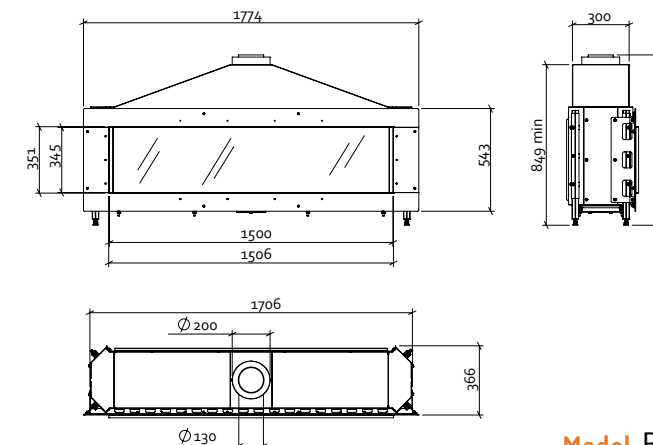
Model C-fire 200



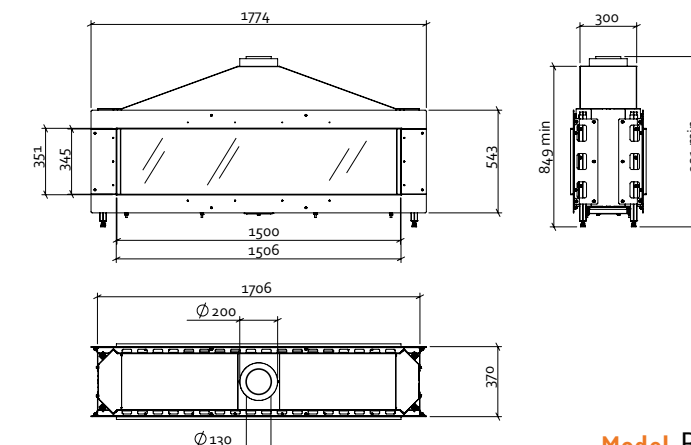
Model B-fire 100



Model B-fire 100 tunnel

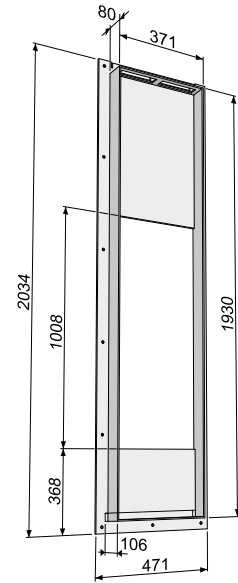


Model B-fire 150

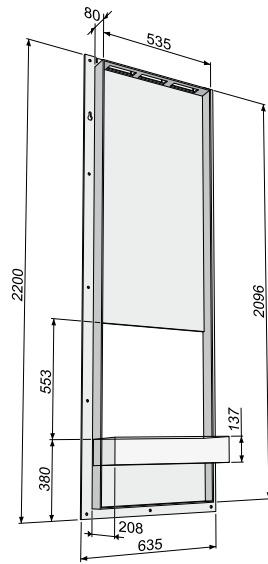


Model B-fire 150 tunnel

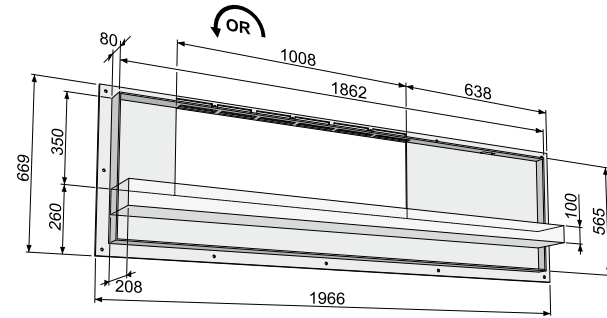
Frames



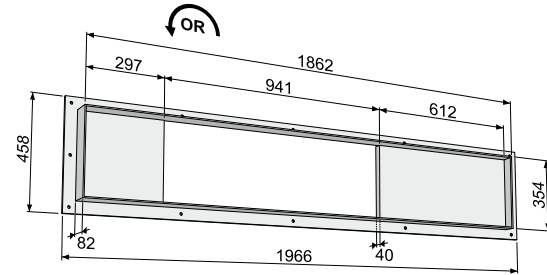
Steel frame SC 35



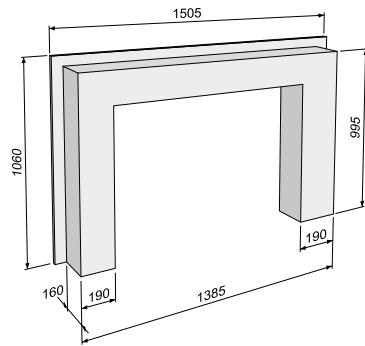
Steel frame SC 50 stone



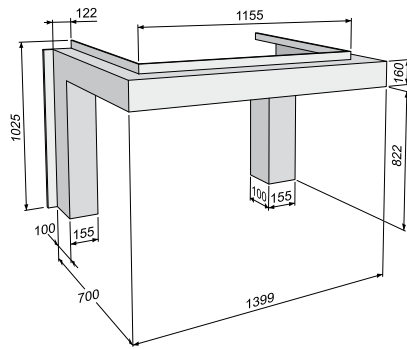
Steel frame SC 100 stone



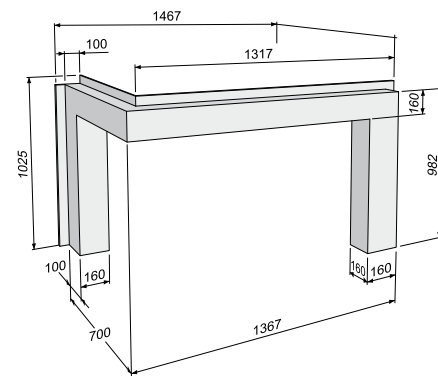
Steel frame SC 100



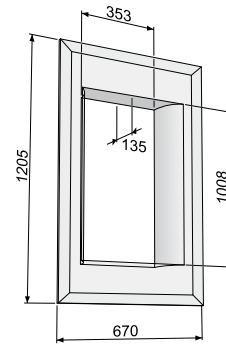
Under-Cover frame UC 100 H



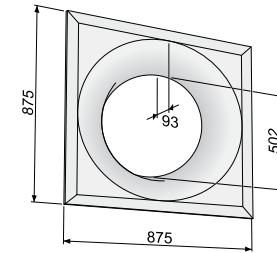
Under-Cover frame UC 100 H3 sided



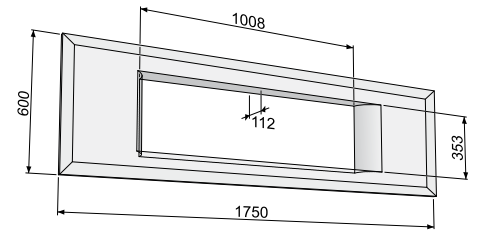
Under-Cover frame UC 100 H hoek



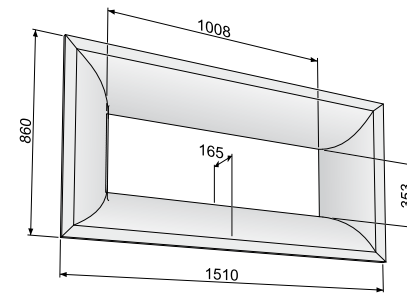
Under-Cover frame UC 35 Piet Boon



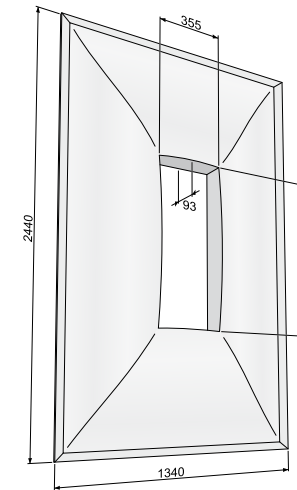
Under-Cover frame UC 50 round



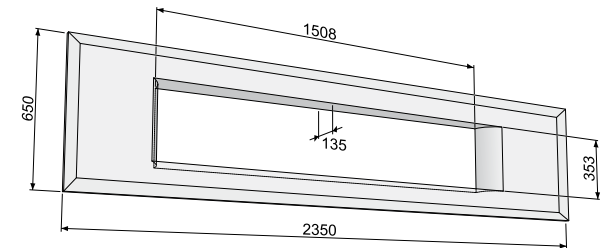
Under-Cover frame UC 100 Piet Boon



Under-Cover frame UC 100



Under-Cover frame UC 100 Roderick Vos



Under-Cover frame UC 150 Piet Boon

Colofon

design Brigitte Boits Rotterdam

photography Rene van der Hulst,

Inga Powilleit [pag. 5, 26, 36, 40, 42, 43, 48, 50, 52, 53, 54]

styling Edith Vervest

special thanks to Piet Boon, Roderick Vos, Linteloo en Richard Schipper



t u l p
f i r e m a k e r s

TULP

Ganzestaartsedijk 1

5525 KC Duizel

The Netherlands

t +31 (0)497 511 299

f +31 (0)497 535 062

info@tulp.eu

www.tulp.eu

Warm Inside

www.tulp.eu